

QUANTIFIABLE EDGES SUBSCRIBER LETTER

ASSESSING MARKET ACTION WITH INDICATORS AND HISTORY

August 8, 2025

Volume 18 Issue 150

Market Overview



Signals Overview

Aggregator	CBI Reading
Flat	1

Tonight's Research Points

- No compelling new evidence emerged on Thursday.

Short-term Outlook

The Bottom Line

The Aggregator is neutral. I agree.

Summary of Recent Active Studies (see Letters from listed dates for details)

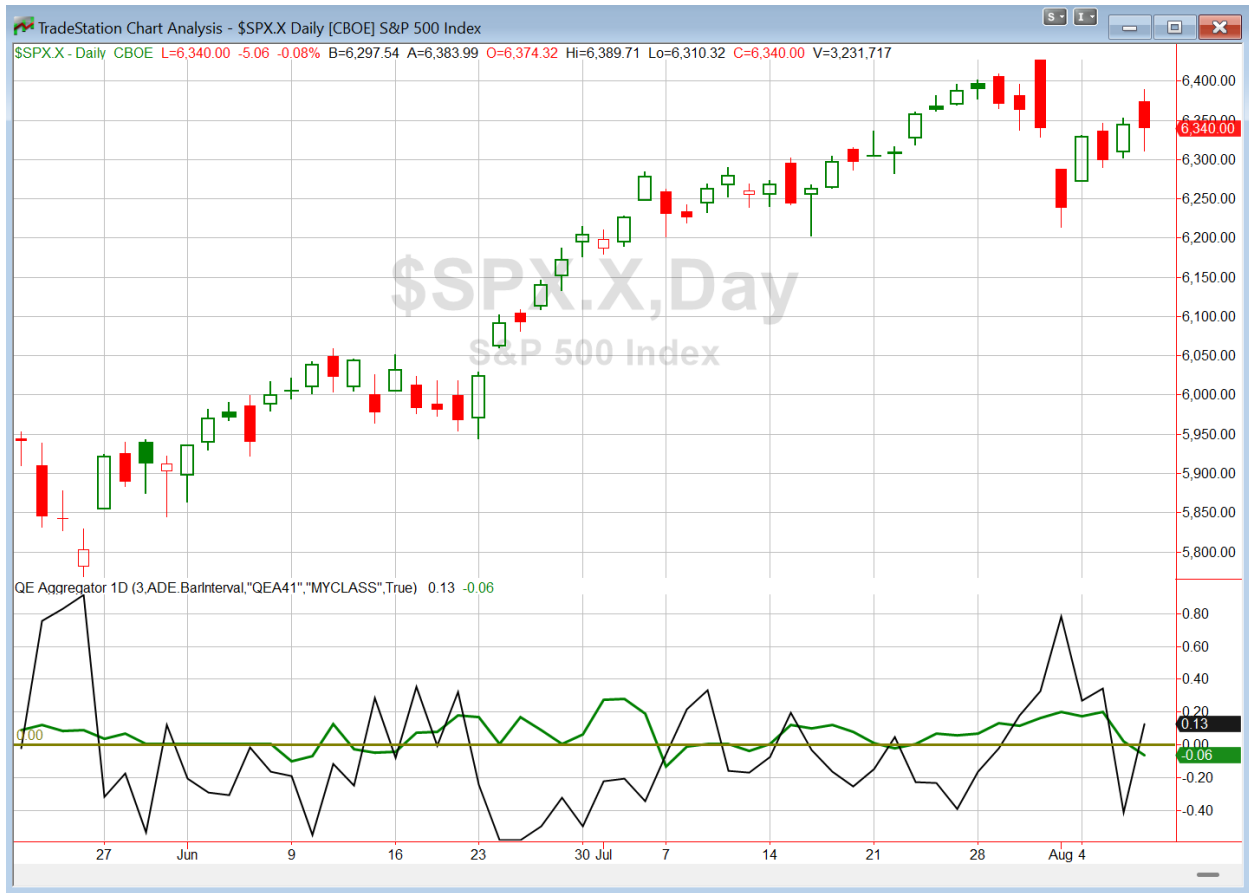
Study Date	Description	Time span	Bias	Avg Run-up	Avg DrawDn	Avg DrawDn - 1 Std Dev
Active - Short Term						
August 7, 2025	NDX up 1%+. SOX down.	1-6 days	Bearish	-2.40%	1.70%	3.40%
August 4, 2025	Dn 4+. Today was biggest drop	1-4 days	Bullish			
Active - Long Term						
July 24, 2025	RSI(2) crosses over 99	1-15 days	Bullish	2.20%	-1.60%	-3.00%
June 30, 2025	SPX Golden Cross (7/1/25)	int term	Bullish			
May 19, 2025	DeGraaf Thrust (55% SPX 20-day high)	1-12 months	Bullish			
May 5, 2025	Sell in May when 5% drop prior	1-6 months	Bearish			
April 28, 2025	NASDAQ Leading	int term	Bullish			
April 25, 2025	Zweig Breadth Thrust	1-12 months	Bullish	29.50%	-2.90%	-6.55%
April 23, 2025	Up Issue % & Up Vol % > 86% 2x in 9 days	1-12 months	Bullish			
September 23, 2024	Fed neutral. QT active. Rates dropping.	int term	Neutral			
June 14, 2024	SPX new high with < 50% stocks > 100ma	1-18 months	Bearish			

The Evidence

Big moves intraday led to a mixed and mild finish. SPX declined 0.1%, the NASDAQ rose 0.35%, and the Russell 2000 lost 0.3%. Breadth was also mixed as the NYSE Up Issues % closed at 48% and the NYSE Up Volume % posted a 50.4% reading. NYSE total volume declined some from Wednesday's level.

No compelling new studies triggered. Tonight will be brief. And I will be traveling the next few days, so there may be some additional shortened letters in the upcoming week as well.

I have updated [the Aggregator chart](#) below.



Without anything new triggering tonight, the green Aggregator Line fell below zero. Negative readings mean net expectations are for downside over the next few days. Meanwhile the black Differential Line moved above zero. The positive Differential Line reading means that SPX is oversold versus recent expectations. So expectations are negative but SPX is now oversold. This is considered a neutral configuration. Neutral configurations are visible on the chart whenever both lines close on opposite sides of zero. Therefore, the Aggregator formation stayed flat at the close.

Based on the current studies, expectations are slated to remain negative on Friday. This could change if compelling new bullish evidence emerges. Meanwhile, the Differential Pivot will be *inverted at 6335.43*. That is 0.1% *below* Thursday's close. An inverted pivot means that the Differential Line will cross through zero if SPX closes flat. In this case, SPX will need to close down at least 0.1% in order to remain oversold. Anything other than that and it will flip to overbought vs recent expectations as of Friday's close.

So the Aggregator is still neutral. That is where I am at as well. I'm not seeing a compelling reason to get involved in new index trades right here. I'll continue to wait for a more compelling reward/risk setup to emerge.

*Intermediate-term Outlook (2 weeks – 2 months) – updated 8/4 – **bullish***

Catapult and Capitulative Breadth Statistics

[Catapult & CBI Presentation Link](#)

Open Catapult Triggers

CHTR @ \$261.75 (bought 1/3 @ limit)

Broad Market Large Cap CBI – 1 (CHTR)

Additional New Trade Ideas

A full listing of system triggers can be found at the [numbered systems page](#) each night. I will cherry pick some of my favorite setups from the S&P 100 and ETF lists along with occasional other trade ideas to track below.

None tonight.

Current Open Trade Ideas

Symbol	Entry Date	Entry Price	Current Price	% Gain/Loss	Notes
TXN(1/3)	7/24/2025	\$186.25	\$190.76	2.42%	<i>sold on open</i>
TXN(1/3)	8/4/2025	\$180.86	\$190.76	5.47%	<i>sold on open</i>
CHTR(1/3)	8/5/2025	\$261.75	\$258.78	-1.13%	Catapult

DISCLAIMER: PAST PERFORMANCE, WHETHER ACTUAL OR TESTED, DOES NOT GUARANTEE FUTURE RESULTS, PROFITABILITY, OR CORRELATION TO ANY LISTED SECURITY OR TRADE IDEA.

This publication is produced by Quantifiable Edges, LLC (QE), and is intended solely for informational and educational purposes. It is a regularly issued impersonal financial research commentary, and should not be construed as personalized investment advice, a solicitation to buy or sell securities, or a recommendation tailored to any individual's financial circumstances. Data provided by Tradestation and Norgate Data. The information presented herein is believed to be accurate at the time of publication, but QE makes no representation or warranty as to its completeness or reliability. Opinions, data and analyses are subject to change without notice. Readers are encouraged to conduct their own due diligence and consult with a qualified financial professional before making investment decisions. There is a high degree of risk in trading and simulated performance results have certain inherent limitations. Unlike an actual performance record, simulated results do not represent actual trading or the results of a specific account or group of accounts. Because these trades may not have been executed, results could misrepresent the effects of market factors like liquidity. Simulated trading programs in general are also subject to the fact that they are designed with the benefit of hindsight. No representation is being made that any account will or is likely to achieve results like those shown. QE, its officers and employees do not accept responsibility for any direct or consequential loss resulting from the use of this information.

Mr. Robert Hanna, author of the publication, is separately affiliated with Eastsound Capital Advisors, LLC (ECA), doing business as Capital Advisors 360. ECA is registered as an investment adviser with the Securities and Exchange Commission (SEC). ECA provides individual client services only in states in which it is filed, or which an exemption or exclusion from such filing exists. Registration with the SEC does not imply a certain level of skill or training. Although ECA clients utilizing the approaches developed by Mr. Hanna incidentally receive the QE Gold Subscription at no charge, ECA does not sponsor, endorse or validate its content. Mr. Hanna and/or his clients may hold positions in securities (including derivatives) mentioned herein; however, such holdings are not intended as endorsements and may change without notice and/or differ from published study indications at the sole discretion of Mr. Hanna. No part of this publication may be reproduced, redistributed, or republished without prior written consent from QE.

Copyright © 2025 Quantifiable Edges, LLC.